

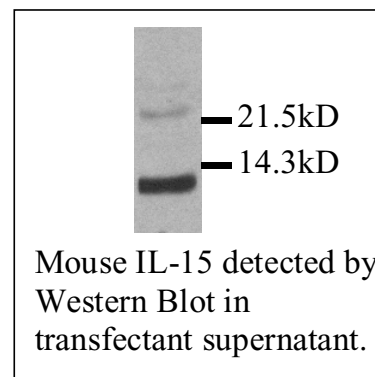
## Purified Rabbit Anti-mouse IL-15

**Catalog Number:** TP242

**Lot Number:** 091319

**Content:** Protein A purified rabbit IgG, 200 µg, with 0.1% sodium azide, lyophilized.

(Reconstitute to 1 mg/ml by adding 200 µl H<sub>2</sub>O)



**Product Description and Usage:** For research use only. This polyclonal antibody, which reacts with mouse IL-15, was generated using *E. coli*-expressed mouse IL-15 as an immunogen. The tested titer for Western blot is 1:5,000.

Cross-reactivity to IL-15 of other species has not been determined.

**Storage Condition:** 4°C for short term storage or -20°C in small aliquots for long term storage. Avoid repeated freeze and thaw.

**Background:** IL-15 is 14-15 kDa, a member of the four alpha-helical bundle family of cytokines. It is very similar to IL-2, except that IL-15 has an IL-15 alpha receptor subunit<sup>1</sup>. It plays an important role in the growth and differentiation of T and B lymphocytes, natural killer cells, macrophages, and monocytes as well as activation of a number of important intracellular

signaling molecules<sup>2</sup>. This implies that IL-15 could be essential for the immune responses, allograft rejection, and the pathogenesis of autoimmune diseases<sup>3</sup>.

### References:

1. Cosman, D, et al. (1995) Interleukin 15 and its receptor. *Ciba Found Symp* 195:221-9
2. Waldmann, T, et al. (1998) Interleukin-2, interleukin-15 and their receptors. *Int Rev Immunol* 16 (3-4): 205-26
3. Kennedy, MK, et al. (1996) Characterization of interleukin-15 (IL-15) and the IL-15 receptor complex. *J Clin Immunol* 16 (3): 134-43